

MOBEYE THERMOGUARD

Mobeye ThermoGuard CM2200



Monitor the ambient temperature via telephone call and SMS message

Be prepared against frost or overheating. Just set the minimum and / or maximum temperature and let the Mobeye ThermoGuard monitor the ambient temperature. As soon as the temperature gets out-of-range you will get an alert of the actual temperature via telephone call and SMS message. The Mobeye ThermoGuard runs on batteries. It is just a matter of entering a SIM card and it is operational.

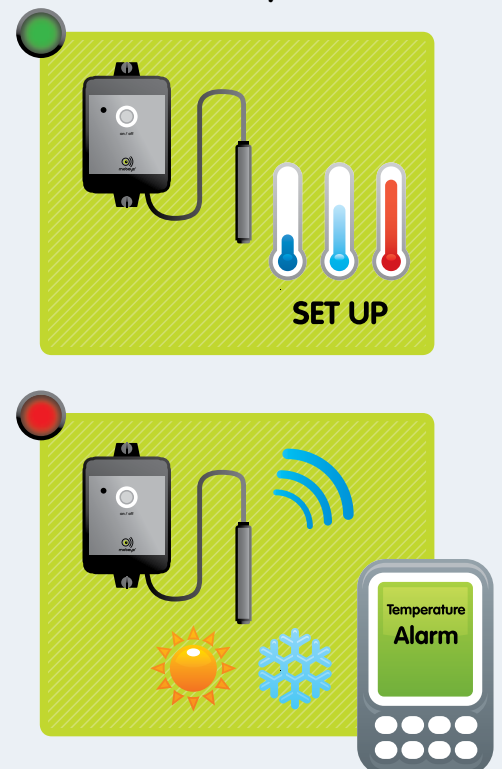
The Mobeye ThermoGuard is equipped with an external digital temperature sensor. The internal GSM module alerts after measuring a violation of the set temperature limits. And to be informed about the ambient temperature, just tell the system you want to receive a 'keep alive message' on a regular base, which includes the actual temperature.



The detector sends an SMS alert and a phone call to up to five phone numbers after an alarm. Several settings can be programmed easily, like minimum temperature, maximum temperature, alarm delays, user defined alarm texts etc.

The module has two additional inputs (NO/NC). By connecting devices or external sensors it can measure much more, like the operation of your machine or several values via the sensors. The Mobeye ThermoGuard is fully battery operated with an option for a 12 VDC power supply or net adapter.

Mobeye ThermoGuard. The easiest way to be alerted!

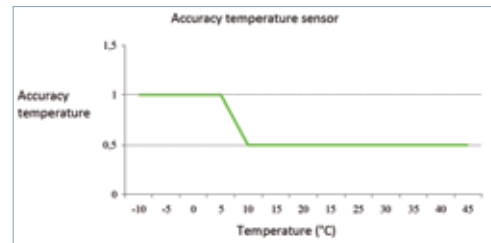


About Mobeye

The company Mobeye is specialized in high quality GSM/GPRS alarm and telemetry technology. Mobeye products are characterised by configuration flexibility, usability and an extremely low power consumption. Mobeye aims to design and market products that contribute to a safer world for its customers.

GSM/GPRS telemetry modules

The CM21 range consists of versatile telemetry modules. The modules are designed to run in a low power battery operated mode. Alternatively they can run on 12 VDC or on the main net via an adapter. They have two inputs and are controlled through programmable actions. The XM2 range has two inputs and several outputs (relays). The powered versions can be controlled at a distance through telephone calls and/or SMS text messages. Low power XM2 versions operate completely independent by using their batteries.



Mobeye ThermoGuard Technical Data	
Inputs	<ul style="list-style-type: none">• 1 digital temperature sensor• 2 (NO or NC)
User interface	<ul style="list-style-type: none">• Switch button• 1x status LED
Dimensions	<ul style="list-style-type: none">• 80x60x40 mm
(Alarm) messages	<ul style="list-style-type: none">• SMS / call at temperature violation• SMS / call at activating an input• SMS at low batteries• SMS test messages ("keep alive")• In case of external power:<ul style="list-style-type: none">• SMS at power failure• SMS at power restoration
Reports	<ul style="list-style-type: none">• Status reports and settings report at request via SMS text messages
Security	<ul style="list-style-type: none">• PIN code security for configuration
Configuration	<ul style="list-style-type: none">• Via SMS text message:<ul style="list-style-type: none">• telephone numbers (max. 5)• minimum temperature• maximum temperature• identification and alarm texts• power failure delay time• input as NO or NC• input delay times• frequency of test messages
Power supply	<ul style="list-style-type: none">• Batteries: 2x CR123 Lithium (included)• Optional: 12VDC (220V net adapter available, art. nr. 10027)
Battery life time	<ul style="list-style-type: none">• > 1 year under normal use
Ambient temperature	<ul style="list-style-type: none">• -10 °C ... +50°C
External sensor	<ul style="list-style-type: none">• -20 °C ... +70°C
GSM/GPRS	<ul style="list-style-type: none">• Quad band EGSM 900/1800 - 850/1900 Mhz